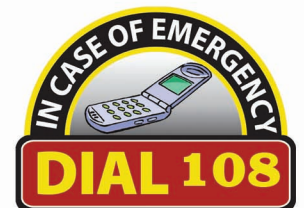


INTEGRATION OF EMERGENCY HELPLINE NUMBERS



**Dial 108 for any
Emergency related to
Fire, Police & Health.**

Save ICE in your Mobile (In Case of Emergency) 108



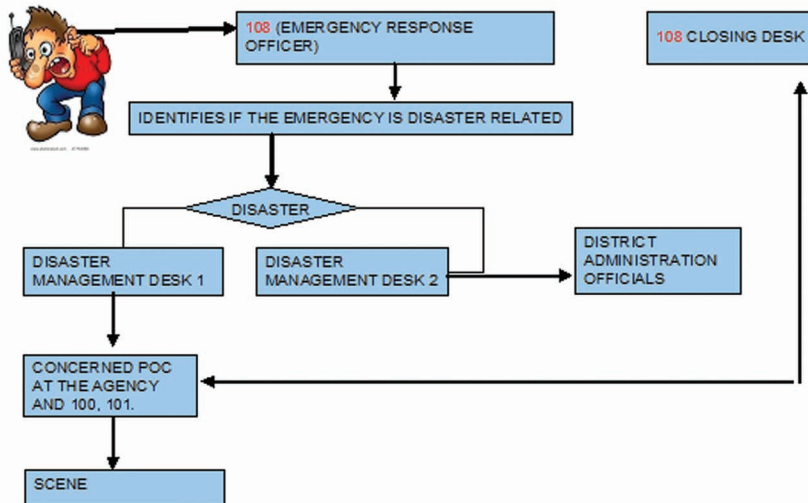
CAPACITY BUILDING

4355 Emergency Response personnel of the Fire & police stations have been trained on their roles and responsibilities as well as communication skills.

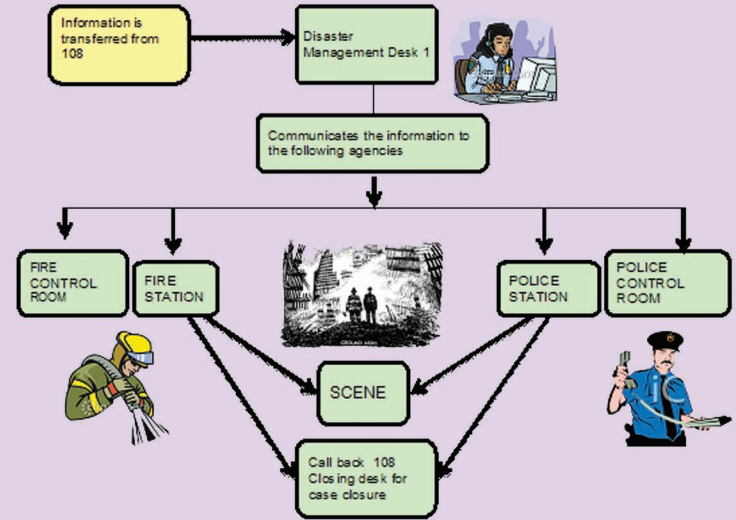
Sl No	Department	Trained Personnel
1.	Police	3666
2.	Fire	648
3.	Health	41
TOTAL		4355

How it will work

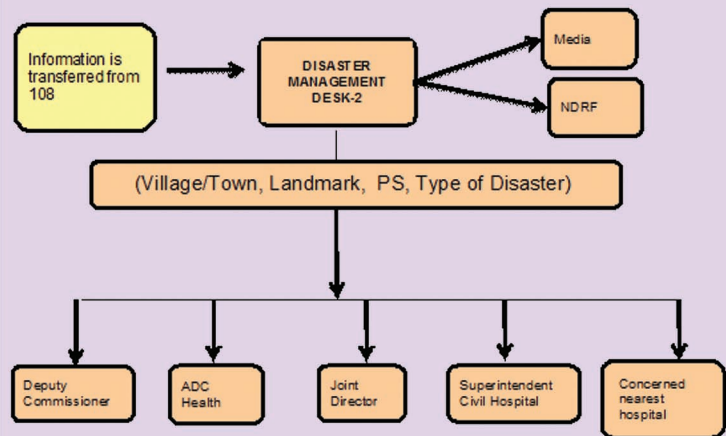
THE WHOLE PROCESS :



DISASTER MANAGEMENT DESK - I



DISASTER MANAGEMENT DESK -- 2



Do's & Don'ts

Do's

- * Dial 108 for any Disaster
- * Provide accurate information about the disaster which includes type of disaster, location, nearest police station, landmark, no. of casualties.
- * Teach your children or grandchildren on how to use 108 wisely in case of a Disaster.

Don'ts

- * DO NOT play with 108 or make false calls.
- * DO NOT call 108 to ask when power will be restored, how road conditions are, or whether schools are open.
- * DO NOT hang up when you dial 108 in a disaster; our dispatchers will need information from you in order to send the appropriate help.
- * DO NOT hang up when you dial 108 accidentally or our dispatcher will have to take time to call you back and verify if you have an emergency, taking them away from actual emergency calls.

